



## Page Index

- Summary	P.1
- Sketches	P.2 - P.2
- Materials	P.3 - P.6
- Sizes	P.7 - P.9
- Costing Sheet	P.10 - P.10



## Members

- Owner	Oleksandra B.
---------	---------------

## Style Info

- Units: Inches
- Sizes: S, M, L
- Sample Size: M

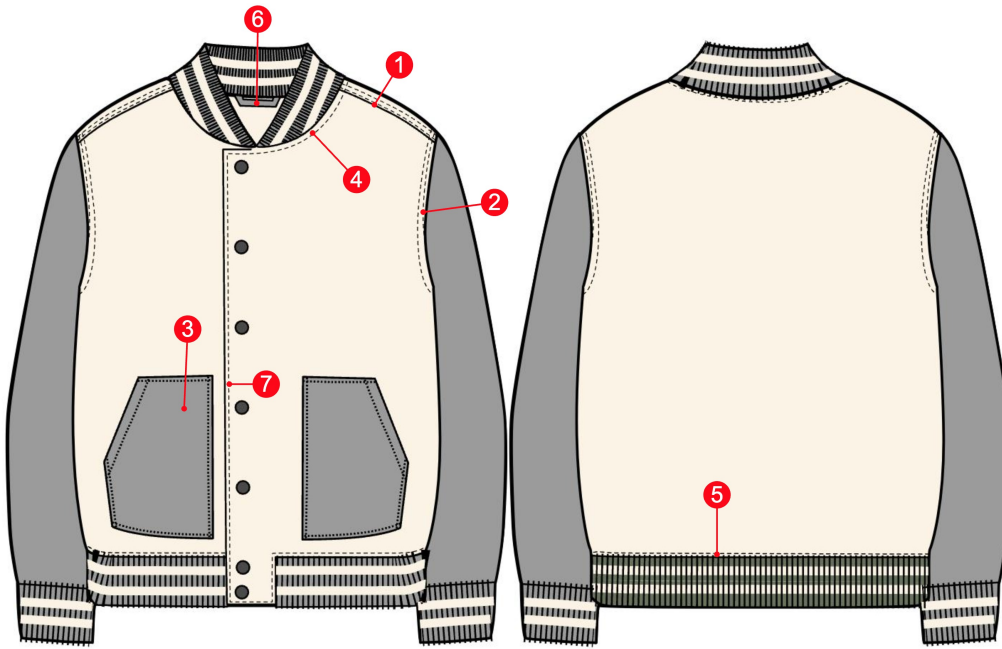




Sketches

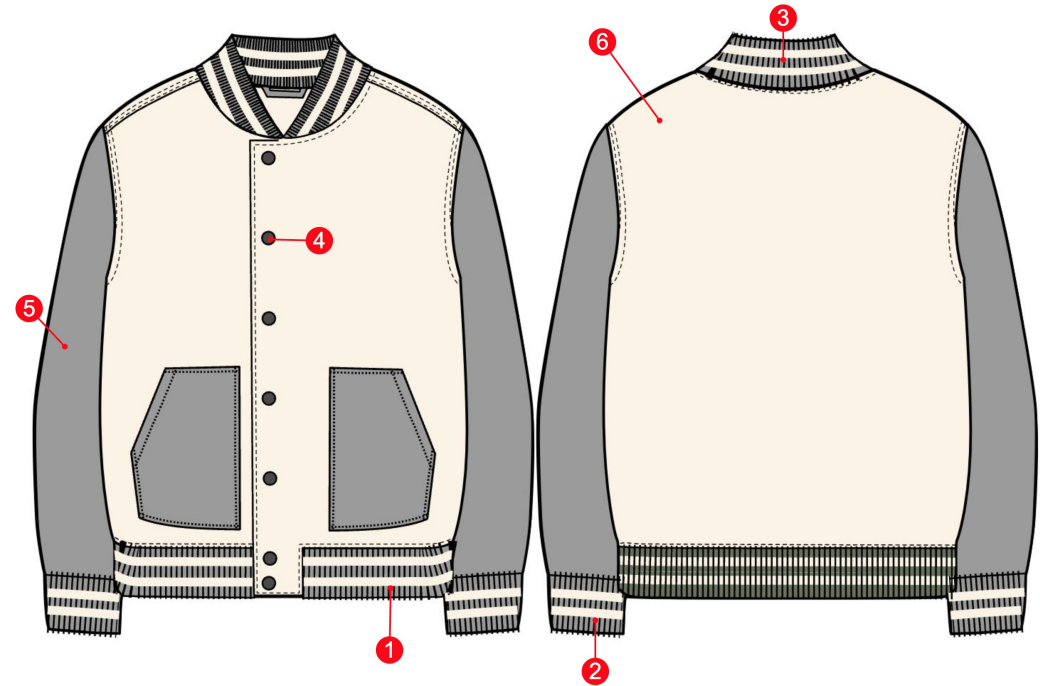
Front and back

- 1 Double stitch at the shoulder seam. Stitch length 2mm, stitch offset 3mm.
- 2 Double stitch at the armhole seam. Stitch length 2mm, stitch offset 3mm.
- 3 Two patch pockets at front.
- 4 Single stitch at the neckline. Stitch length 2mm, stitch offset 3mm.
- 5 Single stitch at the waistband. Stitch length 2mm, stitch offset 3mm.
- 6 Hanging loop sewn inside neckline seam, on the inside back.
- 7 Single stitch at the front placket. Stitch length 2mm, stitch offset 3mm.



Colors and fabric placement

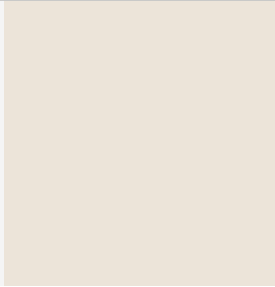
- 1 Waistband is made of rib knit fabric. Colors: Pantone Cool Gray 6C, Pantone 9226C.
- 2 Cuffs are made of rib knit fabric. Colors: Pantone Cool Gray 6C, Pantone 9226C.
- 3 Neckline is made of rib knit fabric. Colors: Pantone Cool Gray 6C, Pantone 9226C.
- 4 Snap closures at front. Color: Pantone Cool Gray 6C.
- 5 Sleeves, pockets fabric: Pantone Cool Gray 6C.
- 6 Body fabric: Pantone 9226C



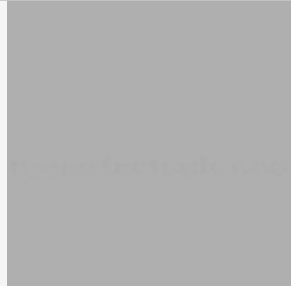


Materials

Felted wool main



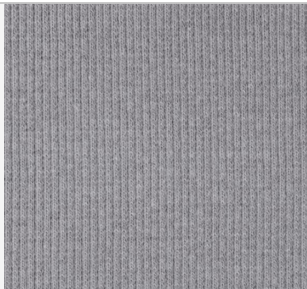
Felted moon accent



Snap fasteners



Rib knit



Thread



Hang Tag



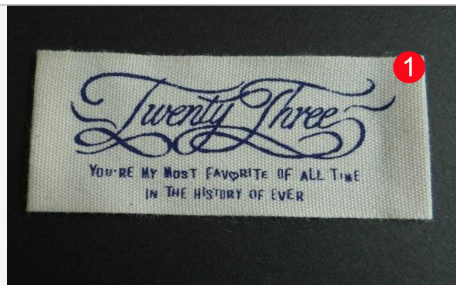


Materials

Main Label

Poly Bag

Wash care tag



**1** Main Label  
 Screen Printing Brand Logo  
 Woven Label  
 100% Polyester Yarn  
 Damask Weave  
 2.5" Length X 1" Width  
 Placement - Garment Wrong Side below back Neckline

**1** Plastic Bag  
 Packaging Plastic Bag  
 Non-woven Bag  
 CPP Plastic  
 transparent film  
 30cm X 40cm

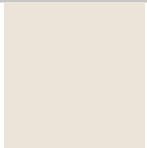

**1** Wash Care Label  
 Woven Wash Care Label  
 1.5" Width X 4" Length  
 100% Polyester  
 Single sided satin Weave  
 Overlock Stitch to main garment





Materials

(\*) Sample size is highlighted in darker green

	Description	COMPOSITION	COLOR	PLACEMENT	SUPPLIER
	Felted wool main	Wool, Polyester	Pantone 9226C	Body	Mood fabrics
	Felted moon accent	Wool, Polyester	Pantone Cool Gray 6C	Sleeves	Prairie Woolens
	Snap fasteners	Metal	Pantone Cool Gray 6C	Front placket	Wawak.com
	Rib knit	Cotton, Polyester	Pantone Cool Gray 6C, Pantone 9226C	Cuffs, waistband, neckline	Fabric.com
	Thread	Polyester	Pantone Cool Gray 6C	All garment	Wawak.com
	Hang Tag	Paper	White/beige, black writing	ATTACHED TO THE MAIN LOGO LABEL WITH TWINE	Easy Busy Packers
	Main Label	Woven	white/black	BARTACK TO THE BACK - WRONG SIDE, MIDDLE OF THE WAISTBAND	Easy Busy Packers
	Poly Bag	Plastic	transparent	EACH GARMENT INDIVIDUALLY PACKED	Easy Busy Packers





Materials

(\* Sample size is highlighted in darker green)

	Description	COMPOSITION	COLOR	PLACEMENT	SUPPLIER
	Wash care tag	Satin	white/black	Right side seam 3" above hem	customlabels4u.com

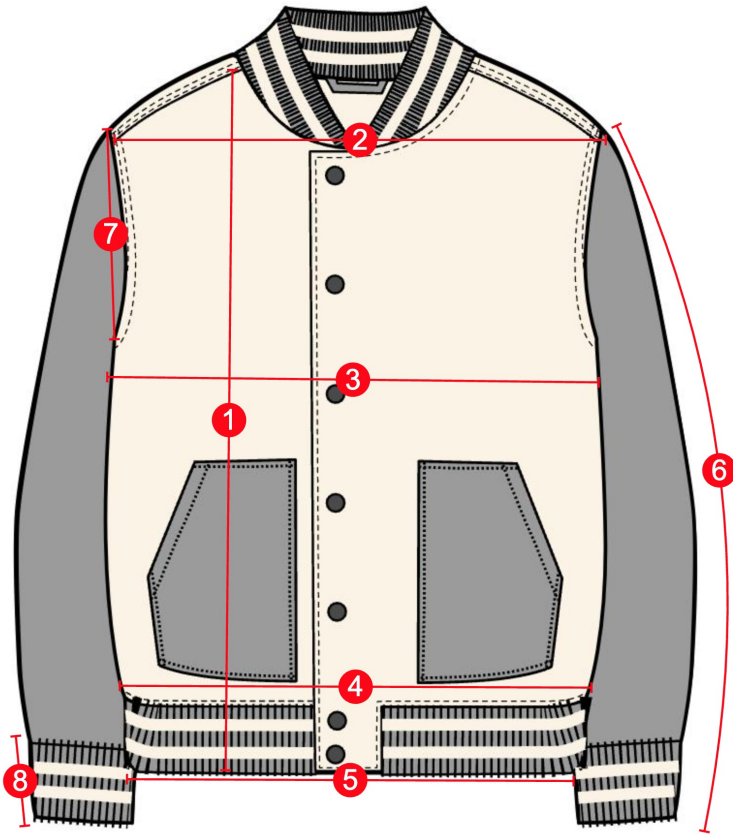




Measurements

Full length from HPS to hem

- 1 Full length from HPS to hem
- 2 Shoulder to shoulder
- 3 1/2 chest (1" below armhole)
- 4 1/2 hips
- 5 1/2 waistband
- 6 Full sleeve length
- 7 Armhole
- 8 Waistband/cuffs width



Neck width (HPS to HPS)

- 1 Neck width (HPS to HPS)
- 2 Neck band width

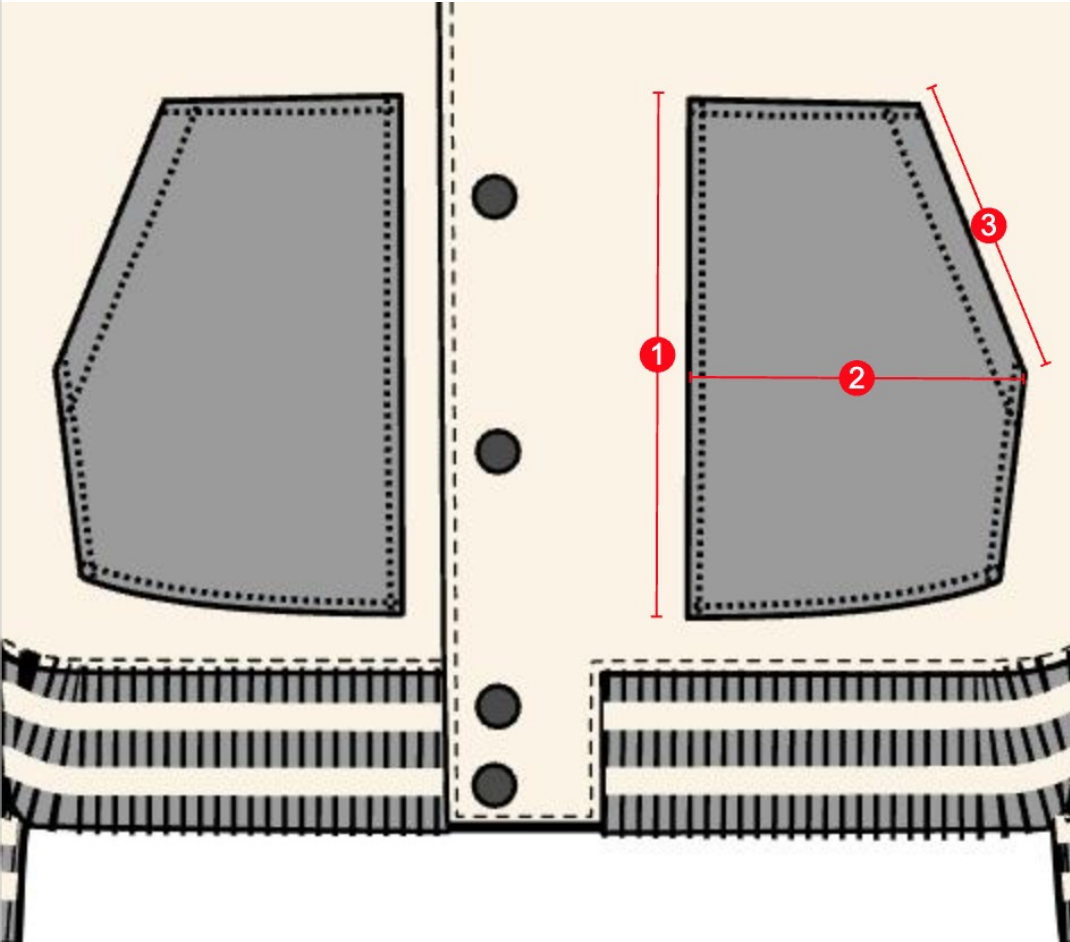




### Measurements

#### Pocket length

- 1 Pocket length
- 2 Pocket width
- 3 Pocket opening







### Measurements

(\*) Sample size is highlighted in darker green

All measurements are in inches

Description	TOL(+)	TOL(-)	S	*M	L
Full length from HPS to hem	1	-1	28	29	30
Shoulder to shoulder	1	-1	17.5	19	20.5
1/2 chest (1" below armhole)	1	-1	20.5	22	23.5
1/2 hips	1	-1	20.5	22	23.5
1/2 waistband	1	-1	19.5	21	22.5
Full sleeve length	1	-1	24	25	26
Armhole	0.5	-0.5	10	10.5	11
Waistband/cuffs width	0.25	-0.25	2.5	2.5	2.5
Neck width (HPS to HPS)	0.5	-0.5	7	8	9
Neck band width	0.25	-0.25	2	2	2
Pocket length	0.25	-0.25	8	8	8
Pocket width	0.25	-0.25	6	6	6
Pocket opening	0.25	-0.25	5.5	5.5	5.5





**Costing Sheet**

Description	Consumption	Cost per unit	Total
Felted wool main	2.5	5	12.5
Felted moon accent	1.5	4.5	6.75
Snap fasteners	7	0.25	1.75
Rib knit	1	3.5	3.5
Thread	1	3	3
Hang Tag	1	0.5	0.5
Main Label	1	0.75	0.75
Poly Bag	1	0.25	0.25
Wash care tag	1	0.75	0.75
<b>Total cost</b>			<b>29.75</b>

